

# ***JULY 2010 at Christ Church***

Dear friends at Christchurch

*Praise be to the God and Father of our Lord Jesus Christ, the Father of compassion and the God of all comfort, who comforts us in all our troubles, so that we can comfort those in any trouble with the comfort we ourselves have received from God (2 Cor.1:3-4)*

TLC has now been running in the Parish Centre on Monday afternoons for just over 2 years, and over that time many people have found that it is a place where they can find **‘Tea, Listening & Company’**. We do want to thank God for the way he has equipped the team running TLC to share his love with people going through all kinds of difficult times. We do have a great team of volunteers, but far more importantly we have a God who cares, and who wants to work through us to bring his comfort to others.

So if you know of people who might be lonely, or bereaved, or suffering from stress or depression, do please give them a card, and invite them to come along. But TLC isn't just for those outside the church – in one of our recent home-group studies we were thinking about ‘carrying one another's burdens’ – and TLC is one of the ways in which that can take place. In our all too individualistic society there are temptations to think that we should be able to manage on our own, but that was never God's plan. He has given us each other, and through TLC and Prayer Ministry we can admit that we need help – and we can find that help.

We do want to see people helped by TLC. But more importantly, we need to keep praying that through TLC people will be encouraged to put their trust in Jesus, because that is above all what we as a church have to offer to our community. Ultimately the help that people need comes from the Lord himself, and all we can ever do is to allow him to work through us.

Yours in Christ

*Graham Cousins*

## Regular weekly activities:

Monday	-	9.30 am Toddler Group
	-	1.00 pm TLC
Tuesday	-	9.30 am Toddler Group
	-	1.15 pm Art Group
	-	4.00 pm Shine
Wednesday	-	9.30 am Toddler Group
	-	1.00 pm Needlecraft Group
	-	1.30 pm Toddler Group
	-	5.15 pm Rainbows
Thursday	-	1.00 pm Craft Group
	-	9.45 am Keep Fit
	-	11.00 am Keep Fit
	-	5.30 pm Brownies
	-	7.30 pm Guides
Friday	-	9.15 am Mothers 'n' Others
	-	7.00 pm Evening Bowls

PLEASE NOTE THAT THE ABOVE ACTIVITIES WILL BE CLOSED FROM 22ND JULY FOR THE SUMMER HOLIDAYS

## Men's Breakfast

Come join us for probably the best breakfast on the Wirral and a chance to think about:

**What would Jesus say to...**

**Lewis Hamilton?**

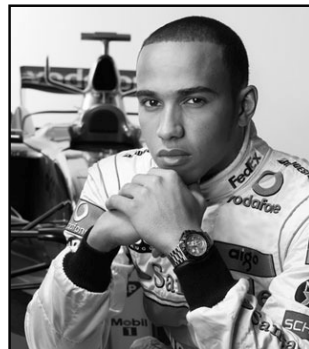
**Saturday 17<sup>th</sup> July 2010**

**@ 8:30am Christ Church Centre**

**Want to know more?**

**Sign up the sheet at the back of church**

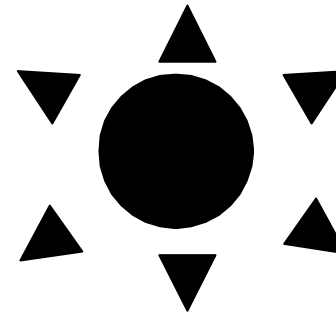
**[www.christchurchmoreton.org.uk](http://www.christchurchmoreton.org.uk)**



## CAMP STAFF NEEDS

**We STILL need You to be Part of It**

Senior 1	-	2 Female group Leaders
Senior 2	-	2 Caterers
Camp Abererch	-	1 Caterer, 3 male & 6 female group leaders
Inters 1	-	2 Caterers & 2 Male group leaders
Inters 2	-	5 female group leaders (to allow 3 per group with younger age group)
Senior +	-	3 Caters & 2 male group leaders



**christ church  
moreton**

## BIG DAYS OUT

**Summer 2010**

27th July	Leasowe Bay	Sand Castles
3d August	New Brighton Dips	Crazy Golf
10th August	Queens Park	Hoylake
17th August	Harrison park	Wallasey
24th August	Wirral Country Park	Thurstaston



Meet 11.00am @ Christ Church Centre

Or 11.30am @ Venue

